

ASTROLOGY

MARIE

LOVE



YOUR LOVE JOURNEY

LEO

[www.moania.ai](http://www.moania.ai)

# PREFACE

## » Astrology, a key to understanding your heart

A birth chart, or natal chart, is much more than a map of the sky – it's an invitation to meet yourself more deeply. Like a key gently turning in a lock, it reveals your sensitivity, your intimate nature, and how you connect with others. For millennia, the movements of the planets have been observed, studied, and interpreted as symbolic reflections of human dynamics. Astrology draws on this ancient wisdom, passed down through generations and continuously reinterpreted in light of evolving awareness.

This love-themed chart guides you through the way you love, attach, and experience relationships. It sheds light on your emotional needs, unconscious wounds or patterns that may influence your bonds, and invites you to move toward greater clarity, safety, and authenticity in your relational life.

Your natal chart is based on three key data points: your **date**, **place**, and **exact time** of birth. These details allow for a precise celestial map, a mirror of your inner world. The **time of birth** determines how the planets are distributed across the twelve *astrological houses*, each representing a different life area (relationships, work, family, etc.). That's why having an accurate time is so important. Each planet carries a particular energy: Venus for love, the Moon for emotional needs, Mars for desire, Mercury for communication... Their placement reveals the tone and priorities of your emotional landscape.

This chart is neither a promise nor a fixed destiny. It is **a tool for self-awareness**, a path to inner reconciliation, a caring mirror. It helps you **embrace your desires, your fears, and your relationship dreams** so you can love with greater depth and intention.

Every part of this analysis was crafted with the human insight and sensitivity of an astrologer, and transcribed with the support of artificial intelligence. It offers you **a subtle and personalised reading**, not as a substitute for personal guidance, but as a concrete foundation for exploring your inner world. **Marie, this chart was written for you – to help you better understand the way you love, connect with your deeper needs, and open your heart with clarity and gentleness.**

If you're unsure about certain technical terms, you'll find a **simple glossary** at the end of the document to help you dive in at your own pace.

**I wish you a luminous reading, Marie – may it bring you closer to yourself... and to the love you deserve.**

# SUMMARY

## INTRODUCTION

### YOUR SKY AS A MIRROR OF YOUR HEART'S JOURNEY

- » Welcome to the heart of your personal sky
- » Understanding the sacred timing of your love life
- » The path to a love that truly reflects who you are

## PART 1

### THE SECRET LANGUAGE OF YOUR HEART

- » Between a quest for harmony and a need for passion
- » The delicate art of expressing your deepest needs
- » Loyalty, desire, and your personal vision of commitment

## PART 2

### ECHOES OF THE PAST, KEYS TO THE FUTURE

- » The recurring patterns on your emotional path
- » Healing the wounds that subtly shape your choices
- » Learning to read the signs and trust your powerful intuition

## PART 3

### CULTIVATING YOUR INNER GARDEN

- » Finding the right balance between giving and receiving
- » From the intensity of desire to the fear of vulnerability
- » Defining your three essential pillars for a fulfilling love

## **PART 4**

### **THE REFLECTION YOU SEEK IN A PARTNER**

- » Beyond appearances: the qualities your soul truly needs
- » The emotional harmony required for you to feel safe and seen
- » The language of love that your heart instinctively understands

## **PART 5**

### **NOURISHING YOUR BOND FOR THE YEAR TO COME**

- » The growth challenges that will strengthen your connection
- » Deepening intimacy and rediscovering shared desire
- » Your personal aspirations within your shared journey

## **CONCLUSION**

### **YOUR LOVE STORY, A PATH OF CONSCIOUS CREATION**

- » Your three greatest strengths to build upon in love
- » Your personal roadmap for a more aligned relationship
- » Embrace the radiant queen of your own heart's kingdom

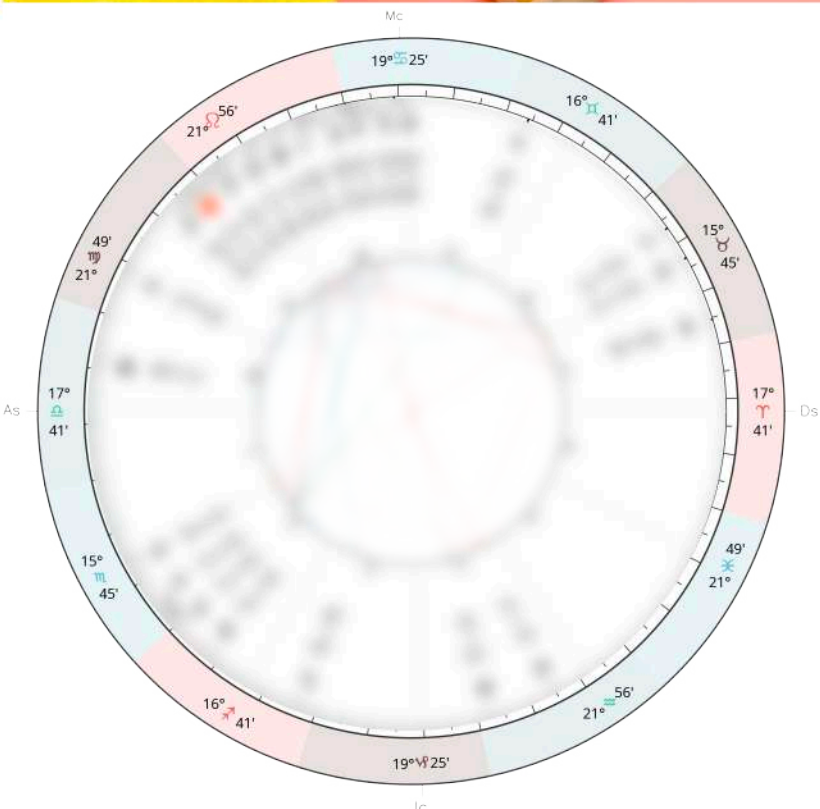


# NATAL CHART

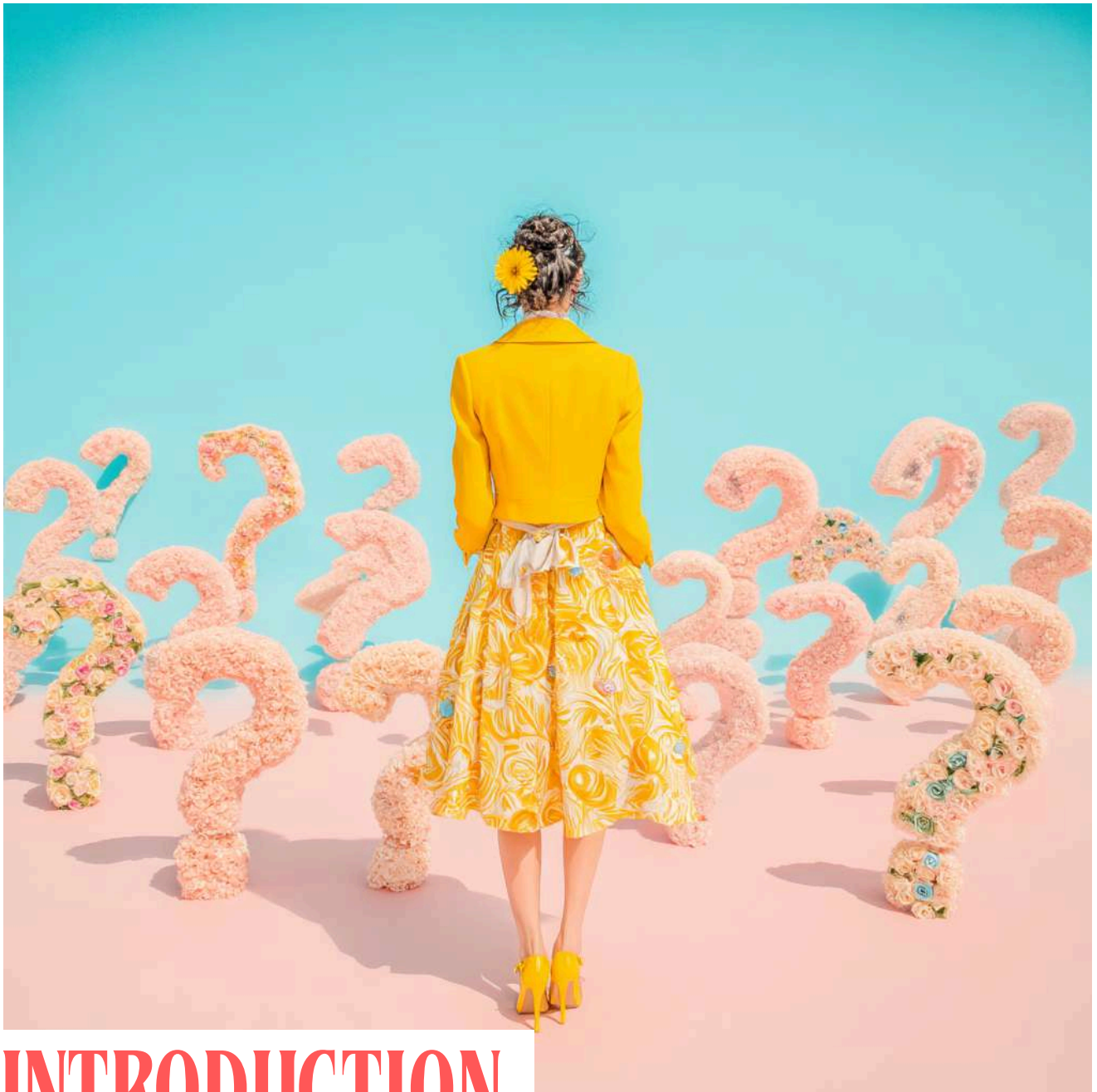
## ASTRAL IDENTITY SHEET

MARIE  
LOS ANGELES

Ac	ASCENDANT	SUN	
	MOON	MERCURY	
	VENUS	MARS	







# INTRODUCTION

## YOUR SKY AS A MIRROR OF YOUR HEART'S JOURNEY

### » Your sky, a guide to your heart's path

Welcome, Marie. At 26, you stand at a meaningful threshold in your life, a time when the questions of the heart echo with a particular resonance. This astrological exploration is designed to be a mirror for your soul, a compassionate guide to understanding the unique language of your love life. Think of your birth chart not as a rigid script

dictating your fate, but as a celestial map rich with symbols, pointing towards your deepest needs, your most brilliant strengths, and the sacred lessons your heart has chosen to learn. You are currently in a relationship you describe as special, a connection that likely feels significant and transformative, and this journey we are about to embark on will help illuminate the deeper purpose of such a bond within your personal evolution. Your chart reveals a powerful calling to live from the heart, with your Sun, Moon, and north node all gathered in the expressive sign of Leo. This means that for you, love is not a mere accessory to life; **it is intrinsically linked to your life's purpose and your need to shine authentically**. Your path is about learning to radiate your unique light, and any partnership must honor and amplify that brilliance, not dim it. With a Libra ascendant, you approach the world with a desire for harmony, beauty, and connection, creating a fascinating dance between your need for relational balance and the powerful, self-driven fire within. This analysis will serve as your guide to navigating this dance, helping you understand how to build a love that feels both deeply connected and gloriously freeing.

## » The cycles of love, a journey of transformation

Your astrological chart speaks of a life where love is never meant to be static or superficial. Instead, **your relationships are designed to be powerful catalysts for transformation**, pushing you to grow and evolve in profound ways. You may have noticed a recurring tension in your life between an intense desire for stability and security, and a simultaneous, almost rebellious, need for freedom and authenticity. This is one of the central stories written in your stars, a dynamic tension involving the planets Mars, Saturn, and Uranus. It suggests that you are learning to build a love that can contain both passion and



structure, both commitment and space for individual expression. Every experience, whether a moment of blissful connection or a painful challenge, is part of a larger, intelligent cycle. Nothing is ever wasted on your path. Each person you meet, and especially the connection you are in now, serves as a mirror, reflecting back to you the parts of yourself that are ready to be seen, healed, and integrated. Your Venus, the planet of love, is in the analytical sign of Virgo and in a retrograde motion, indicating that your journey involves a deep, internal re-evaluation of what love, worthiness, and connection truly mean to you. You are here to move beyond idealistic or superficial definitions of love and to craft a more conscious, discerning, and grounded approach. **Understanding these cycles is the first step toward breaking free from any repetitive patterns** that may have caused you pain in the past. It allows you to see that every phase, including this one, arrives at the perfect time to teach you exactly what your soul needs to learn next, guiding you toward a love that is truly aligned with who you are becoming.

## »» **This study, your personal compass**

This in-depth analysis is crafted to be your personal compass, helping you navigate the beautiful and complex landscape of your heart. It is a tool for introspection, designed to empower you with clarity and self-awareness, whether you are seeking to deepen your current relationship or simply understand your own relational nature more profoundly. Together, we will gently peel back the layers to reveal the core of your being. We will begin by exploring the secret language of your heart, identifying your most fundamental emotional and security needs, and understanding how you are wired to give and receive love. Then, we will journey into the echoes of your past, not to dwell there,

but to lovingly extract the wisdom and lessons from previous experiences, allowing you to release old patterns and move forward with grace. Following that, we will focus on cultivating your inner garden, offering practical tools and perspectives to help you build a strong foundation of self-love and emotional balance, which is the bedrock of any healthy relationship. We will then paint a portrait of the partner and the dynamic that would truly complement your soul, helping you recognize the reflection you seek in another. Finally, we will look at the year ahead, identifying the celestial energies that will support the growth and evolution of your love life, offering you keys to consciously co-create the bond you desire. **This journey is an invitation to become the conscious author of your love story**. The map is already within you; this analysis is simply here to help you read it, trusting that every step you take brings you closer to a love that feels like coming home to yourself.



## PART 1

### YOUR SKY AS A MIRROR OF YOUR HEART'S JOURNEY

#### » Your fundamental needs: a dance between fire and earth

At the very heart of your being, your chart reveals a radiant and non-negotiable need: to be seen, celebrated, and loved for the unique light you carry. With a powerful concentration of energy in Leo in the tenth house, your emotional well-being and your life's purpose are intertwined with the act of shining. Love, for you, is not a quiet refuge

hidden from the world; it is a grand stage where your heart must feel free to express its warmth, creativity, and generosity. You need a partner who is not intimidated by your brightness, but who acts as a loving audience, encouraging you to take center stage in your own life. This need for recognition is not about ego, but about a deep, soulful necessity to feel that your existence matters and that your love has a visible, positive impact. However, this fiery, expressive core is anchored by a profound and complex set of needs rooted in the depths of your emotional world. Your chart speaks of an intense craving for a connection that is both unshakably secure and deeply transformative. This is the dance between your Mars in Scorpio and your Saturn in Taurus. On one hand, you yearn for a love that is all-consuming, passionate, and unafraid of exploring the shadows. **You need a fusion of souls, an emotional and physical intimacy that transcends the superficial.** Casual connections leave you feeling empty; you are wired for a bond that involves total trust, raw honesty, and a shared sense of power. On the other hand, this intensity is counterbalanced by a powerful need for tangible stability, loyalty, and unwavering security. You need to know that the ground beneath your relationship is solid, that promises are kept, and that the bond can withstand the tests of time. This creates a powerful internal paradox: the desire to merge completely, coupled with a deep-seated fear of losing control or being betrayed. Adding another layer to this dynamic is a revolutionary urge for freedom and authenticity, stemming from Uranus in your fourth house. **Deep down, you have an unbreakable need to be entirely yourself, even if it disrupts the status quo.** This means any relationship that feels restrictive, conventional, or forces you to hide parts of who you are will ultimately feel like a cage. Your ideal love must therefore perform a delicate balancing act: providing the fierce loyalty of a Scorpio bond, the

steadfast security of a Taurean commitment, and the liberating space of an Aquarian ideal. Understanding this complex triad of needs—for recognition, for intense security, and for radical freedom—is the first key to honoring your true nature in love. It explains why you may feel pulled in different directions and why a connection with a spiritual dimension, which can hold these apparent contradictions, feels so significant to you now.

## » The art of connection: your heart's language

When it comes to navigating the world of relationships, you present an aura of grace, charm, and a sincere desire for harmony. Your Libra Ascendant is your outward expression, the way you naturally approach others. You seek balance, fairness, and beauty in your connections, and you have an innate talent for making others feel comfortable and understood. In the initial stages of a relationship, you are likely diplomatic, considerate, and focused on creating a beautiful, shared reality. You instinctively understand the give-and-take required for a partnership to flourish. However, beneath this smooth and pleasing surface lies a much more complex and considered inner world of love. Your Venus, the planet of love and affection, is in Virgo and in a retrograde motion. This placement suggests that your approach to love is not spontaneous or impulsive, but rather thoughtful, analytical, and deeply internalized. You don't just fall in love; you study it, you reflect upon it, and you seek to understand its mechanics. **You may have spent a significant amount of time deconstructing your own patterns and defining what a healthy, functional relationship truly means to you.** This retrograde motion is an invitation to write your own rules for love, rather than accepting societal norms. Your heart's language is one of devotion,



practical support, and a desire for mutual improvement. You show your love not through grand, dramatic gestures, but through consistent acts of service, by paying attention to the small details that make your partner's life better, and by offering gentle, constructive feedback aimed at growth. However, this Virgo placement can also bring a shadow side of perfectionism. You may hold both yourself and your partner to incredibly high standards, and a fear of imperfection can sometimes prevent you from fully relaxing into the messy reality of love. Your communication style, guided by Mercury in Cancer, is deeply intuitive and emotional. **You don't just share thoughts; you share feelings.** You need to feel emotionally safe to truly open up, and your words are often imbued with care, nurturing, and a desire to protect the connection. When you feel secure, you can be an incredibly empathetic and supportive communicator. But if you feel threatened or misunderstood, you may retreat into a protective shell, finding it difficult to articulate your needs logically. The challenge is to bridge the gap between your analytical heart (Venus in Virgo) and your feeling-based mind (Mercury in Cancer). At times, you might over-think your feelings or feel overwhelmed by emotions that defy your logic. Learning to trust the wisdom of your heart, even when it doesn't make perfect sense, is a crucial part of your journey. Your unique art of connection lies in your ability to blend graceful diplomacy with heartfelt devotion and emotional intelligence, creating a bond that is both beautiful and built to last.

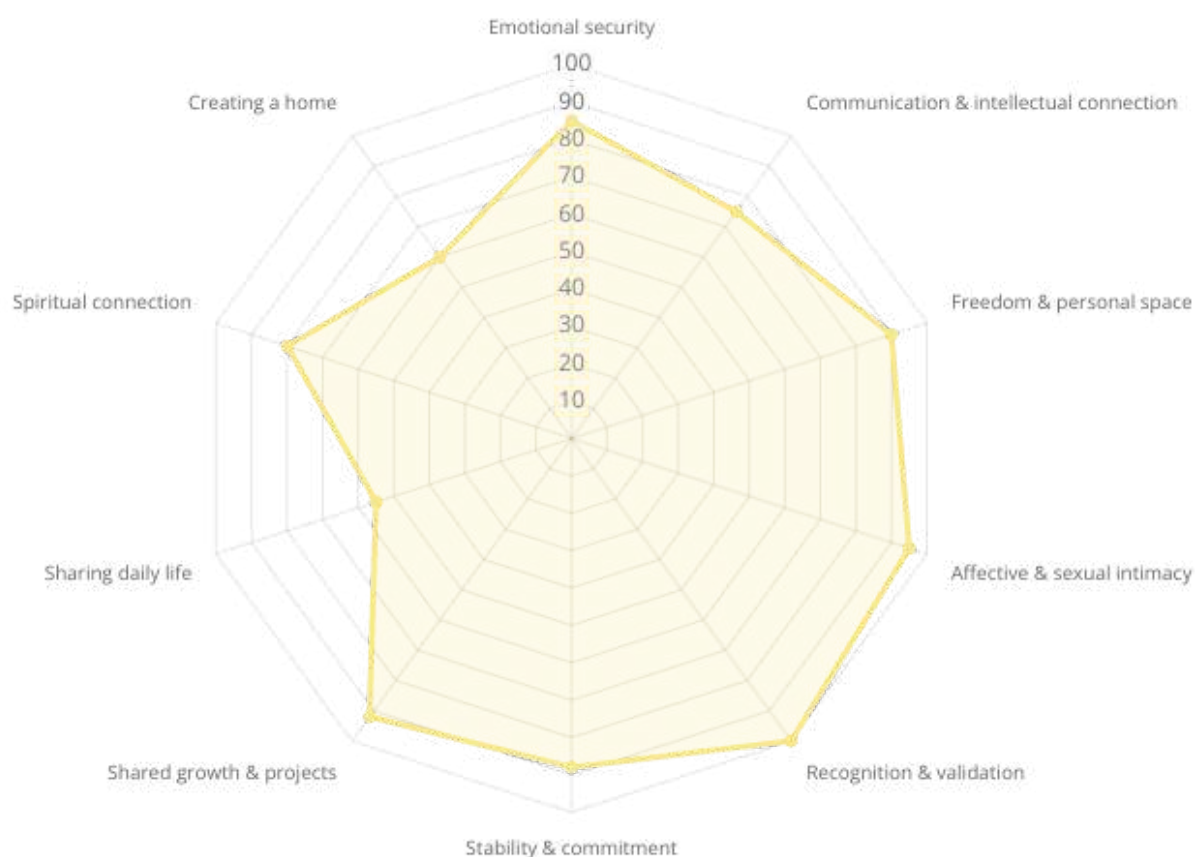
## » **Commitment, sexuality, and the sacred bond**

For you, commitment is not a social contract or a simple agreement; it is a sacred, soul-level pact. This is profoundly illustrated by the potent

combination of Mars, Juno, and Chiron all residing in Scorpio in your second house. Juno, the asteroid of marriage and committed partnership, being in Scorpio reveals that you seek nothing less than a complete and total union. You crave a partner who is willing to merge with you on every level—emotionally, psychologically, and physically. Superficiality in commitment is your greatest turn-off. You need to know that your partner is all in, ready to face the deepest truths and navigate the most intense challenges alongside you. This placement demands absolute loyalty and can stir deep feelings of possessiveness or jealousy if that trust is threatened. It's not about ownership, but about a primal need to protect the sanctity of the bond you have built. Your sexuality, governed by Mars in this same sign, is far from casual. It is a powerful, transformative energy that serves as a gateway to deeper intimacy and spiritual union. For you, the physical act of love is a way of dissolving boundaries, sharing secrets without words, and touching the very essence of your partner's soul. **Sexuality is a healing and regenerative force, but it is also where you are most vulnerable.** This is emphasized by the presence of Chiron, the wounded healer, right alongside your Mars and Juno. This indicates that your deepest wounds are linked to themes of intimacy, self-worth, trust, and betrayal. Past experiences may have left you feeling powerless or devalued in intimate contexts, creating a deep-seated fear of vulnerability. Your journey involves learning to embrace your powerful sexual nature not as a source of potential pain, but as a profound tool for healing both yourself and your partner. This requires building unshakeable self-worth (the domain of the second house) so that you enter into intimacy from a place of wholeness, not need. The opposition between this intense Scorpio energy and Saturn in Taurus in your eighth house adds another critical layer. Saturn here brings a serious, cautious approach

to shared resources, intimacy, and the very act of merging your life with another's. **You have a profound fear of loss and a powerful need to build something tangible and enduring.** This can manifest as a fear of being indebted to another, whether financially or emotionally, and a hesitation to fully surrender control. You need to build trust slowly and methodically, ensuring the foundation is solid before you allow for the complete soul-merging your Scorpio side craves. Ultimately, your path is to find a partner who understands and honors this sacred vision of commitment—someone who is not afraid of your intensity, who values absolute loyalty, and who is willing to build a secure, lasting empire of two, founded on mutual trust and profound transformation.

# YOUR FUNDAMENTAL NEEDS



**\* Important Note :** The percentages in this chart are the result of a **rigorous analytical process** based on the birth chart, but they remain **symbolic and relative representations**. They reflect **dominant tendencies**, not fixed truths. Quantifying human qualities inevitably involves simplification: these figures are guideposts to be read with **perspective, curiosity, and discernment**.

This chart maps your deepest emotional and relational needs. The percentages represent the importance of each theme in your quest for a fulfilling love life, offering a clear guide to what you should prioritize. It is a visual synthesis of your birth chart's energies, designed to help you understand the essential ingredients of your personal happiness in a relationship.

To feel truly fulfilled in your love life, Marie, your primary need is to be **seen and celebrated for who you are**. This isn't about

superficial attention; it's a profound need for your unique light, your creativity, and your ambitions to be recognized and valued by your partner. A relationship where you feel you have to shrink yourself or hide your radiance will ultimately feel empty. This core need is intrinsically linked to another powerful driver: **profound intimacy**, both emotional and physical. For you, love must be a transformative experience, a deep dive into the soul of another, where vulnerability is met with unwavering presence. You are not built for shallow connections; you crave an intensity that merges souls and creates something entirely new. A relationship must therefore be a stage where your authentic self can shine, supported by a connection of rare depth and passion.

Your chart reveals a central dynamic you must honour: the synergy between a powerful need for freedom and a deep desire for commitment. You thrive on **unshakeable commitment that honours your freedom**. This may seem contradictory, but for you, it's essential. You need a partner who understands that your independence and personal space are not a threat to the relationship, but rather the very things that allow you to show up fully within it. True stability, for you, is not found in rigid structures but in a bond strong enough to allow for individual evolution. This is why shared growth is so crucial. You are here to evolve, and your ideal relationship is one where you and your partner are consciously supporting each other's journey, building a shared future without sacrificing your individual paths. It's about creating a team that champions mutual growth.

This quest for a meaningful partnership is coloured by a distinct spiritual dimension. You are likely drawn to connections that feel



'*meant to be*', carrying a sense of destiny or a higher purpose. This need for a **spiritual connection** provides a foundation for the intensity and transformation you seek. While creating a traditional home or focusing on the minutiae of daily life are less of a priority, the essence of what you are building is a sanctuary—a dynamic, evolving space where two whole individuals come together. Your path to fulfilment lies in finding a '*soul-level partnership*' that nourishes your light, respects your freedom, and joins you on a shared path of purpose and profound connection.



## PART 2

### ECHOES OF THE PAST, KEYS TO THE FUTURE

#### » The recurring patterns on your romantic path

To understand the path ahead, we must first look back at the footprints you've left behind. Your romantic history is not a series of random events, but a rich tapestry woven with recurring threads. At the heart of these patterns lies a powerful and complex dynamic in your birth chart, a celestial tension that defines much of your

relational experience. Imagine three powerful forces within you, each pulling in a different direction. First, there is an intense, magnetic desire for profound, soul-merging connection, a force that seeks total vulnerability and shared power, located in the deepest part of your chart related to your self-worth. This is the part of you that craves a love that is all-consuming and transformative. Opposing this is a profound need for tangible security and stability, a guardian at the gates of your heart who fears chaos and loss above all else. This force wants guarantees, promises, and a love built on solid, unshakable ground. It resists the very intensity the first part craves because it equates deep vulnerability with the risk of immense pain and devastation. And to complete this trio, a third force, rebellious and electric, demands absolute freedom and authenticity. This part of you cannot stand to be confined, controlled, or defined by a relationship. It will shatter any structure that feels too restrictive, even if it's the very security you thought you wanted. **This inner tug-of-war is the source of your most persistent relationship patterns.** You may find yourself drawn to partners who embody one of these extremes: someone intensely passionate and possessive, who awakens your desire for fusion but ultimately triggers your fear of being consumed; or someone stable and predictable, who offers security but eventually feels suffocating to your free spirit. Or perhaps you attract partners who are themselves caught in this paradox, blowing hot and cold, creating a cycle of intense connection followed by sudden distance. The lesson here is not to choose one force over the others, but to recognize that you contain all three. Your journey is about learning to integrate them. The pattern breaks when you stop seeking a partner to resolve this inner tension and instead start building a relationship with these parts of yourself. **You are learning to create a love that is both intensely deep, securely grounded, and liberatingly authentic.**

To begin this work, you can practice self-observation. When you feel drawn to someone, ask yourself which part of you is being activated. Is it the desire for intense fusion? The need for safety? Or the longing for freedom? By simply naming the impulse, you reclaim your power from the unconscious pattern and can begin to make more conscious choices, moving from reaction to creation in your love life.

## » The wounds that shape your choices

Behind every recurring pattern lies an unhealed wound. In your chart, the celestial markers of commitment, intimacy, and core wounding are intricately linked in the area concerning your self-esteem and personal values. This indicates that your deepest vulnerabilities in love are tied to fundamental questions of worth, trust, and betrayal. There is a profound sensitivity here, suggesting that past experiences where trust was broken or where you felt powerless in a connection have left a significant mark. This is not a weakness; it is the source of your greatest potential for wisdom and healing in relationships. **This core wound whispers that deep intimacy is inherently unsafe and that giving your full trust will inevitably lead to pain.** It's a protective mechanism born from experience, one that may cause you to unconsciously test your partners, withhold parts of yourself, or sabotage a connection just as it begins to deepen, all in an attempt to preemptively avoid being hurt again. Compounding this is the placement of Venus, the planet of love, in a state of deep introspection in your chart. This suggests a tendency towards perfectionism in love, not necessarily directed at your partner, but at yourself. You might hold yourself to impossibly high standards, constantly analyzing your actions and feelings, and believing you must 'earn' love by being helpful, flawless, or self-sacrificing. This can

lead to a dynamic where you give far more than you allow yourself to receive, secretly feeling that you are not quite *'enough'* as you are.

**The belief that you must be perfect to be loved is a heavy burden to carry.** This wound is also connected to your karmic past. Your South Node suggests a soul history of prioritizing intellectual detachment and radical independence as a defense mechanism. In past lives, or perhaps in your early family environment, you may have learned that emotional expression was messy or unreliable, and that it was safer to remain aloof and self-sufficient. While this fostered independence, it also created a barrier to true, heart-centered connection. Your soul's journey in this lifetime is to move away from this detached self-reliance and towards the warmth, generosity, and courageous vulnerability of an open heart. Healing these wounds involves a gentle but conscious turning inward. It begins with acknowledging the reality of past hurts without letting them define your future. Techniques like inner child work can be incredibly powerful, allowing you to connect with the part of you that felt betrayed or unworthy and offer her the compassion and security she never received. It is about reparenting yourself, assuring that younger you that she is worthy of a love that is safe, loyal, and unconditional.

## » From red flags to green lights

Learning to recognize the early warning signs—the *'red flags'*—is crucial to breaking old cycles. For you, these flags are often subtle, not loud alarms but quiet whispers from your intuition that you may have learned to ignore. With your Ascendant in Libra, your natural inclination is towards harmony, balance, and pleasing others. You are skilled at seeing the other person's point of view and will often go to great lengths to avoid conflict. While this is a beautiful quality, it can



also be your Achilles' heel. Your biggest red flag is often the feeling of your own inner peace being disturbed. It's that subtle clenching in your stomach when you agree to something you don't want, or the quiet dimming of your inner light when you silence your own needs to keep a partner happy. **Your desire for external harmony can lead you to betray your internal harmony.** Learning to see this inner discomfort as a valid and urgent signal is your first step. Furthermore, your chart highlights a rebellious, truth-telling energy within your communication style. This is the part of you that knows, on a gut level, when something is inauthentic or unjust. However, you may have learned to suppress this raw, intuitive voice, perhaps because it was deemed too blunt, too intense, or too disruptive in the past. A major red flag, therefore, is any situation where you feel you cannot speak your uncensored truth. If you find yourself carefully editing your words, downplaying your feelings, or hiding your true opinions to maintain the relationship, your inner truth-teller is waving a giant red flag. Honoring this voice means accepting that authentic connection can withstand—and is even strengthened by—honest disagreement. Your emotional intelligence is another powerful compass. With Mercury in the sensitive sign of Cancer, you communicate from the heart. You feel your way through conversations. A significant red flag for you is when your emotional expression is met with cold logic, dismissal, or an inability to connect on a feeling level. **You cannot thrive in a relationship where the language of the heart is not spoken or understood.** To shift from unconsciously ignoring red flags to consciously seeking green lights, you can create a practice of regular emotional check-ins. Several times a day, and especially after interacting with a partner, take a moment to ask yourself:

- How does my body feel right now? Expansive and relaxed, or tight and contracted?
- Do I feel energized or drained by this connection?
- Do I feel seen and heard for who I truly am, or for a version of myself I am performing?

This practice retrains you to trust your body's wisdom and your emotional truth as your most reliable guides. It is the path to choosing partners and dynamics that don't just look good on the outside, but feel truly right on the inside, creating a foundation for the secure, passionate, and liberating love you seek.



## PART 3

### ECHOES OF THE PAST, KEYS TO THE FUTURE

#### » From perfection to presence: softening your inner critic

Your path in love has been shaped by a profound inner tension between a desire for impeccable order and a reality that is often beautifully messy. With Venus, the planet of love and values, moving retrograde in the meticulous sign of Virgo at your birth, you approach relationships with an innate desire to improve, refine, and *'perfect*

them. This isn't born of cold criticism, but of a deep, heartfelt devotion. You see the highest potential in a connection and feel a calling to help it get there. However, this same impulse can become a source of immense pressure, both on yourself and on a partner. **You might carry a quiet, persistent feeling that neither you nor the relationship is ever quite *'good enough'*.** This can manifest as a tendency to focus on the flaws, the small details that are out of place, or the ways in which the reality of a bond doesn't live up to the pristine ideal in your mind. This is amplified by the presence of Saturn in Taurus in your eighth house of deep intimacy, which demands tangible, unshakable security. This part of you fears loss so intensely that it tries to control every variable, creating rigid expectations about what loyalty, trust, and commitment must look like. Anything less than absolute certainty can feel like a threat. The challenge here is not to abandon your high standards, but to distinguish between your non-negotiable core needs and the perfectionistic standards that keep you in a state of constant evaluation. True security doesn't come from controlling the other person, but from trusting your own resilience. **Your journey is about learning to embrace the beauty of imperfection and to find peace in a love that is real, not just ideal.** This requires a conscious effort to shift your focus from what is lacking to what is present and thriving. A powerful practice for you would be to keep a gratitude journal dedicated to your relationship, noting not the grand gestures, but the small, everyday moments of connection, kindness, and shared humanity. This helps retrain your mind to see the value in what is, rather than constantly striving for what could be. Letting go of rigidity doesn't mean lowering your standards; it means expanding your capacity for grace.

## » Navigating the tides of intensity: from reaction to response

You experience love with a rare and captivating intensity. The conjunction of Mars, Juno, and Chiron in the passionate sign of Scorpio speaks of a soul that doesn't just dip its toes in the waters of intimacy—you dive into the abyss. For you, commitment (Juno) is fused with raw desire (Mars) and your deepest wounds (Chiron). This means that relationships are not just a source of pleasure, but your primary arena for healing and transformation. However, this potent combination also creates a vulnerability to extreme emotional reactions. When you feel threatened, betrayed, or abandoned, the response is not mild; it is a primal surge that comes from the very core of your being. This is the source of the all-or-nothing dynamic you may have experienced: total fusion or complete severance. This intensity is then squared by the rebellious energy of Uranus in Aquarius, located at the root of your chart in the fourth house. **This creates a powerful internal paradox: one part of you craves an all-consuming, soul-deep merger, while another part needs radical freedom and will shatter any connection that feels confining.** This is why you might find yourself pushing a partner away precisely when intimacy deepens, or feeling an inexplicable urge to break free just when things become stable. Your past patterns may involve cycles of intense connection followed by sudden emotional detachment, a defense mechanism rooted in your South Node in Aquarius. It's a way to protect your heart from the overwhelming power of your own Scorpio depths. Understanding this dynamic is the key to mastering it. Your emotions are not the enemy; they are messengers from your soul. The work is not to suppress your intensity, but to learn how to hold it without letting it consume you. When you feel a powerful reaction rising, instead of acting on it immediately, try to pause. **Create a sacred space for yourself to feel the emotion fully without judgment.** Ask it: *'What are you trying to protect me from? What old*



*wound has been touched?*' This practice of conscious inquiry transforms a knee-jerk reaction into a mindful response. It allows you to honor the depth of your feelings (Scorpio) while giving yourself the space and perspective (Aquarius) needed to act from a place of wisdom, not fear. This is how you reclaim your power and learn to be both deeply connected and authentically free.

## » **Building your inner sanctuary: defining your love foundation**

To create a truly aligned and sustainable love life, the most important work is to build a solid foundation within yourself. This isn't about finding someone to complete you, but about becoming so whole within yourself that a relationship becomes a beautiful extension of your inner harmony, not a desperate search for it. Your chart powerfully points to this truth. With your Sun, Moon, and North Node all shining in the radiant sign of Leo in your tenth house of public life and purpose, your emotional well-being and very identity are tied to your ability to express your unique light authentically. **A relationship must be a stage upon which you can shine even brighter, not a place where you have to dim your light to fit in.** Self-respect, for you, is non-negotiable. It means honoring your creativity, your leadership, and your need to be seen and celebrated for who you are. Any connection that asks you to be smaller is not aligned with your soul's purpose. This is reinforced by Jupiter's expansive presence in your seventh house of partnership; you are meant to grow through your relationships, to find joy and abundance in them. But this growth can only happen if you are firmly rooted in your own truth first. The journey is about moving from seeking external validation to cultivating an unshakable sense of inner worth. This is the true antidote to the perfectionism of your Venus in Virgo and the fear of

your Saturn in Taurus. When you know your own value, you no longer need a partner to prove it to you, nor do you fear losing them, because your core sense of self is secure. To make this concrete, I invite you to undertake an exercise to define your personal *'Love Foundation'*. This foundation consists of the three essential, non-negotiable pillars that must be present for you to feel safe, honored, and joyful in a relationship. This isn't a list of a partner's attributes, but a description of the emotional and energetic environment you need to thrive. Take some time to reflect deeply and write them down. Based on your unique sky, they might look something like this:

- Pillar 1: Mutual Celebration. A dynamic where both partners genuinely champion each other's passions, successes, and individual radiance, creating a space for authentic self-expression without jealousy or competition.
- Pillar 2: Unwavering Loyalty. A foundation of absolute trust and emotional security, where vulnerability is met with fierce protection and commitment is a sacred, unbreakable bond that can withstand life's storms.
- Pillar 3: Sovereign Interdependence. A balance where deep connection and fusion coexist with a profound respect for each other's freedom, individuality, and personal space, allowing both partners to be whole individuals as well as a united pair.

**These pillars become your inner compass, guiding your choices and helping you recognize a love that truly nourishes your soul.** This is how you build a love that is not just a passing affair, but a testament to your own inner alignment.



## PART 4

### CULTIVATING YOUR INNER GARDEN

#### » The portrait of the partner your soul recognizes

To understand the partner who truly resonates with you, we must look beyond a simple list of qualities and delve into the landscape of your soul. Your chart reveals that the partner you are destined for is not a person who offers a life free of challenges, but one who has the courage to walk with you through the depths. With the asteroid Juno,

which symbolizes the ideal partner and the nature of commitment, located in the intense sign of Scorpio and tightly connected to both Mars and Chiron in your second house, the message is incredibly clear. **You are not meant for a superficial or conventional love**. Your soul recognizes a partner who is a fellow alchemist, someone who understands that true intimacy is forged in the fires of transformation. This person is not afraid of shadows, intensity, or the raw, unfiltered truth of emotional life. In fact, they are drawn to it, seeing it as the gateway to profound connection. They must be someone who values loyalty not as a social contract, but as a sacred soul bond, an unwavering presence in the face of life's inevitable crises. This is a partner who can meet your passion with equal intensity, not to create drama, but to generate a powerful energy of co-creation and mutual empowerment. The presence of Chiron here indicates that this partner is intrinsically linked to your healing journey. They may mirror your own wounds around trust, betrayal, or self-worth, not to hurt you, but to help you finally heal them. **A true soul partner for you is one with whom you can be completely vulnerable, knowing that your deepest fears will be held with reverence, not judgment**. This person understands that love is not about perfection, but about the courage to show up with all your imperfections and love the other person in theirs. Because this powerful configuration is in your second house of self-worth and values, the right partner will fundamentally reinforce your sense of value. Their presence in your life should make you feel more rooted, more powerful, and more aware of your own intrinsic worth, not less. They will be someone who wants to build something tangible and lasting with you—a shared life, shared resources, a shared sense of security that is both emotional and material. This is a stark contrast to partners who might be drawn only to the thrill of intensity without the desire for commitment, a pattern

you may have encountered in the past. The ideal partner understands that true power in a relationship comes from shared vulnerability and the unwavering commitment to navigate the depths together.

## » The emotional and loving harmony you need

Beyond the intense soul-level connection, a lasting relationship is built on the daily rhythm of emotional and affectionate exchange. Your chart paints a beautiful and specific picture of the harmony you need. Your Moon in Leo in the tenth house reveals your fundamental emotional need: you need to be seen, celebrated, and admired by your partner. Your heart blossoms when your feelings are acknowledged with warmth and generosity. You need a partner who is not only comfortable with your radiance but is your biggest fan, someone who takes genuine pride in your accomplishments and encourages you to shine brightly in the world. **A partner who tries to dim your light or feels threatened by your success will slowly extinguish your emotional vitality**. This is not about ego; it is about your core need for your emotional self to be validated through joyful recognition. Your partner's emotional world should be one where they can offer this warmth freely. A partner with their Moon in a fire sign (Aries, Leo, or Sagittarius) would intuitively understand your need for passion and expression. A partner with their Moon in an air sign (Gemini, Libra, Aquarius) could offer the admiration and social grace that makes you feel appreciated. On the other hand, your way of expressing love is quite different, as shown by your Venus in Virgo. You show love through acts of service, practical help, and a sincere desire to improve things for your partner and the relationship. Your love language is thoughtful, detailed, and deeply devoted. You might be the one who remembers the little things, who offers constructive

advice, or who works tirelessly behind the scenes to make life better. Because your Venus is retrograde, this process is deeply internalized; you analyze love and your own worthiness in love with great care. **You need a partner who recognizes these practical acts as profound expressions of love, not as criticism or control.** They must value your devotion and see the heart behind your desire to make things *'better'*. A partner with their Venus in an earth sign (Taurus, Virgo, Capricorn) would naturally appreciate your tangible approach to love and share your desire to build something stable. A partner with Venus in a water sign (Cancer, Scorpio, Pisces) could bring emotional depth to your practical care, helping you feel that your efforts are truly received on a soul level. The ideal harmony for you, therefore, is a delicate dance: a partner who can give you the grand, warm, celebratory emotional support your Leo Moon craves, while also deeply valuing the quiet, meticulous, and devoted acts of service that your Virgo Venus offers. It is in the integration of these two energies—the radiant queen and the devoted priestess—that you will find true relational fulfillment.

## »» **Where and how to cultivate a destined encounter**

The concept of a 'destined encounter' is often romanticized, but your chart suggests it is less about a random bolt of lightning and more about a moment of profound alignment. The key to this lies in the Vertex, a point in your chart often associated with fated meetings, which is located in Taurus in your eighth house. This placement offers powerful clues not only about the nature of a significant partner but also about the environments and inner states that make such a connection possible. The eighth house is the realm of deep psychological transformation, shared resources, intimacy, and the

mysteries of life and death. Taurus is the sign of stability, sensuality, nature, and tangible value. This combination suggests that you are most likely to meet a significant partner—or deepen a current significant connection—in contexts that involve profound inner work and building tangible security. This is not about looking for love in superficial places. It is about engaging in activities that foster your own transformation and stability. For example, you might encounter such a connection in:

- Workshops or therapy focused on deep psychological healing, intimacy, or trauma.
- Financial planning or investment contexts where you are consciously building your own security.
- Practices that connect you deeply to your body and sensuality, such as tantra, somatic experiences, or even pottery and sculpture, where you create something tangible and beautiful.
- Experiences in nature that ground you and connect you to the earth's stability and rhythm.

The crucial insight here is that you don't find this partner by searching for them outwardly. **You attract them by becoming them—by embodying the qualities of stability, self-worth, and emotional courage yourself.** The eighth house asks you to do your own inner work, to face your fears around vulnerability, trust, and control. The more you build your own inner sanctuary of security (Taurus), the more you become a vibrational match for a partner who can meet you in that deep, stable, and transformative space. Given your current journey within a special connection, these themes are likely the very curriculum your relationship is presenting to you. The 'destined' aspect is not just about the meeting, but about the work you are called to do



together. It is a path of mutual healing and building a shared foundation of unshakable trust and value. **The most powerful thing you can do to cultivate this love is to invest in your own emotional and material well-being.** Focus on understanding your own psychology, healing your relationship with money and self-worth, and grounding yourself in your body. By tending to your own inner garden with such dedication, you create the fertile ground upon which a destined love can truly blossom and endure.



## PART 5

### NOURISHING YOUR BOND FOR THE YEAR TO COME

#### » The alchemy of expansion and commitment

The upcoming year, from August 2025 to August 2026, marks a pivotal chapter in your journey, not just for you as an individual, but for the very fabric of your relationship. A powerful wave of expansive energy, symbolized by Jupiter's journey through the highest point of your chart in your tenth house, is set to illuminate your life's purpose

and public identity. This isn't just about professional success; it's about how your connection contributes to, and is seen within, your broader life story. Jupiter's arrival here is like a spotlight turning on, asking you to consider what you and your partner are building together that the world can see. This transit will form a powerful conjunction with your Midheaven, the very pinnacle of your chart, suggesting that **your relationship is being called to step onto a bigger stage alongside you**, becoming an integral part of your legacy. You may feel a growing desire for your partnership to reflect your highest ideals and ambitions. This period is also marked by Jupiter activating Eros, the asteroid of passionate, creative life force, three times over the year. This suggests that your shared passion and creative energy are key fuels for this expansion. It's an invitation to infuse your shared goals with a sense of excitement and profound desire. However, this expansive energy will also challenge your sense of identity, as it forms a tense square to your Ascendant. You might feel a pull between the grand vision of who you are becoming and the familiar way you relate to others and maintain harmony. The key is to not see this as a conflict, but as a dynamic tension that encourages growth. **You are learning to hold a larger presence in the world without losing the grace and balance that is so natural to you**. This period is beautifully supported by Jupiter forming a flowing trine to your natal Mars in Scorpio. This harmonious aspect will energize your deepest desires, your self-worth, and your capacity to act with courage and conviction. It's a celestial green light to pursue what you truly value, and it will give you the confidence to navigate the visibility that is coming your way. Your task is to consciously direct this potent energy. How can your special connection become a source of mutual empowerment as you both step more fully into your light? This is a time for shared vision boards, for dreaming big

together, and for celebrating each other's wins as your own. **Your love story is no longer a private affair; it is becoming part of the masterpiece you are creating with your life .**

## » Reinventing intimacy, healing the foundations

While one part of your sky is focused on outward expansion, another is initiating a profound and quiet revolution within the most private realms of your life. Uranus, the planet of sudden change and liberation, continues its journey through your eighth house, the domain of intimacy, shared resources, and deep psychological transformation. This is a long-term process of awakening, designed to shatter any outdated patterns or fears surrounding true vulnerability. This year, this liberating energy forms an exceptionally rare and supportive trine to your natal Venus retrograde. This is a monumental opportunity for healing. Your Venus, being retrograde in Virgo, carries a tendency towards perfectionism in love, a deep-seated feeling of needing to *'earn'* affection through service, and a habit of over-analyzing emotions. The Uranian energy is here to free you from this self-imposed cage. **It offers a chance to reinvent the rules of love and intimacy on your own terms, embracing a connection that is authentic, spontaneous, and beautifully imperfect.** You may experience sudden insights or breakthroughs in your relationship that allow you to see your partner and your own needs in a completely new light. This is a time to experiment, to communicate radical truths with love, and to allow your bond to breathe. Simultaneously, the deep, transformative power of Pluto is at work in your fourth house, the very foundation of your emotional security and inner world. Pluto's presence here is slowly but surely unearthing deep-seated family patterns and old definitions of safety.

As it conjuncts your natal Neptune, it is dissolving illusions you may have held about what makes you feel truly *'at home'*. This can be unsettling, as the ground beneath your feet feels like it's shifting, but it is an essential process of purification. You are being asked to find your security not in external circumstances, but within the unshakable truth of your own soul. In the context of your relationship, this means **you are learning to build a shared emotional home based on radical honesty and mutual psychological support, rather than on old conventions or unspoken expectations**. The combination of these two powerful transits is transformative. Uranus provides the lightning bolts of insight that break open old structures, while Pluto does the deep excavation work. The invitation is to allow your connection to become a safe crucible for this alchemical process, a space where both of you can shed old skins and emerge more authentic and deeply connected than ever before. **True intimacy for you now lies in the courage to be completely seen, with all your flaws and all your brilliance**.

## » From daily devotion to shared dreams

The grand transformations occurring in your public life and private world need to be anchored in the present moment, in the simple, tangible reality of your day-to-day existence. This is where the influence of Saturn and Neptune, both transiting your sixth house of daily routines, health, and service, becomes crucial. This area of your chart governs the rhythm of your life, and for the next year, it is undergoing a profound recalibration. Saturn's presence here calls for structure, discipline, and conscious intention in your daily habits. It asks: what practical structures can you put in place to support the well-being of both yourself and your relationship? This could manifest

as creating shared rituals, establishing healthy boundaries around work-life balance, or committing to practices that nourish your physical and mental health as a couple. At the same time, Neptune is dissolving old, meaningless routines and infusing this same area with a quest for soul and purpose. It asks you to find the sacred in the mundane. **Your love is nourished not by grand gestures, but by the conscious, devoted presence you bring to the small, everyday acts of care and service.** This is the perfect energetic climate to honor your Venus in Virgo, which finds its deepest expression of love through practical, thoughtful support. The challenge during this period will be to navigate the potential for confusion, as Neptune will also square your natal Mercury. This can create moments of misunderstanding or emotional fog in your communication. The antidote is to practice compassionate clarity, speaking from the heart and ensuring you truly hear what your partner is feeling, not just what they are saying. To complement this focus on sacred routine, the North Node, your karmic compass, will be transiting your fifth house of joy, creativity, romance, and self-expression. This is a powerful directive from the universe: **do not let your relationship become solely about deep healing or ambitious goals; it must also be a source of play, laughter, and lighthearted fun.** This is a call to consciously schedule time for creative dates, to explore shared hobbies that bring you both joy, and to celebrate the pure, simple pleasure of being together. This transit, forming supportive aspects to both your natal Mars and Saturn, gives you the energy and the discipline to make romance a priority. Here are a few key actions to anchor these energies:

- Create a weekly '*sacred check-in*' to discuss your feelings, dreams, and needs, ensuring communication remains clear and heart-centered.

- Commit to one shared creative or playful activity per month that has no goal other than pure enjoyment, feeding the romantic spark.
- Define one daily ritual of devotion—it could be making coffee for each other in the morning or a moment of connection before sleep—to ground your love in tangible presence.

By weaving together conscious daily structure with intentional joy, you create a resilient and vibrant foundation that can support the immense growth you are both destined for. This balanced approach ensures your extraordinary connection continues to flourish in the beautiful reality of everyday life.





# CONCLUSION

## YOUR LOVE STORY, A PATH OF CONSCIOUS CREATION

### » The sacred equation of your heart

As we reach the end of this exploration, Marie, the central message of your sky becomes clear. Your romantic journey is not about finding a simple, easy path, but about learning to hold three powerful, seemingly contradictory truths at once: the craving for a soul-deep, transformative fusion; the profound need for a tangible, unshakeable

foundation; and the non-negotiable demand for radical personal freedom. For years, you may have felt pulled apart by these forces, believing you had to sacrifice one to honor another. **The true revelation of your path is that you are not meant to choose between passion, security, and freedom, but to become the container in which all three can coexist.** This is your sacred equation. Your relationships, especially the significant connection you are currently experiencing, serve as a powerful crucible to test this integration. Every moment of tension, every surge of passion, every desire for space is an invitation to look within and ask: *'How can I provide this for myself first?'* When you stop seeking a partner to solve this internal paradox, you begin to embody the answer yourself. **You become the stable ground for your own intensity and the safe harbor for your own independence.** This inner alchemy is the key that unlocks a love that doesn't confine but expands, a bond that is both thrillingly deep and liberatingly spacious.

## » Your inner compass for an aligned love

So, where do you begin this work in a concrete way? Your chart offers a clear compass. The first direction points toward redefining your relationship with perfection, a theme deeply ingrained in your approach to love. That quiet inner voice suggesting that you, your partner, or the bond itself is never quite *'enough'* must be met with compassion. Your work is not to achieve a flawless ideal, but to find the sacred in the real. This means consciously celebrating the small, devoted acts of service that are your natural love language, and receiving them from another without measuring them against an impossible standard. The second direction is to unapologetically nourish your own light. Your emotional well-being and sense of

purpose are deeply intertwined with creative expression and being seen for who you are. **A healthy relationship must be a stage where your radiance is amplified, not a reason to dim your glow.** Make your creative passions, your ambitions, and your joy non-negotiable priorities. Finally, the third direction involves building trust through courageous vulnerability. Your deepest wounds are linked to trust and the fear of loss. **Healing happens not by building higher walls, but by learning to place one small, authentic brick of trust at a time.** Share a small truth, express a gentle need, and allow the connection to hold you. Each time it does, you reclaim a piece of your power to build a truly secure bond.

## » **Becoming the sovereign of your heart**

Ultimately, your entire love story is a thread in a much larger tapestry: your soul's journey toward authentic, heart-centered leadership in your own life. Every challenge and every joy in your relationships is preparing you to step into your power, to express your truth with the regal grace of your Leo heart. You are learning to rule the kingdom of your inner world not with control, but with courage, generosity, and unwavering self-respect. This path asks you to be both the fierce warrior who protects her boundaries and the warm-hearted queen who loves with an open, magnanimous spirit. The special connection you are navigating now is a profound opportunity to practice this sovereignty. It is a mirror reflecting where you are fully embodied in your power and where you still give it away. **By focusing on your own growth, your own stability, and your own creative fire, you become an energetic match for the very love you seek to co-create.** You stop waiting for a love that will make you feel whole and instead build a life so full and vibrant that love becomes a beautiful, natural

extension of it. **Your path is not about finding a love that completes you, but about courageously building a life where your love can flourish in its fullest expression.**

# THANKS

**Thank you from the bottom of our hearts for your trust, Marie! 🙏**

We hope this reading offered you valuable insights into your way of loving, your deepest needs, and the unique sensitivity you bring into your relationships.

May this exploration guide you to love with more gentleness, clarity, and awareness. ✨

If you wish to continue this journey of self-discovery, other themes are available on **moania.ai**: a professional chart to uncover your talents and path to fulfillment, or an astral initiation to better understand your essence and life challenges.

And to follow our latest inspirations, find us on Instagram:

**@moania\_astro**

See you soon,



MOANIA

# GLOSSARY

## » THE SIGNS AND ASTROLOGICAL HOUSES

- **Aries:** A Fire sign ruled by Mars, it represents impulse, instinct, the will to act and to start. It carries the energy of beginnings, with vitality directed towards action.
- **Sign associated with House 1:** the image we project, our approach to life, spontaneous behavior, self-assertion.
- **Taurus:** An Earth sign ruled by Venus, it embodies stability, sensory pleasure, loyalty, and construction. It moves forward with patience and seeks emotional, material, and sensory security.
- **Sign associated with House 2:** relationship with money, security, self-worth, and tangible needs.
- **Gemini:** An Air sign ruled by Mercury, it expresses curiosity, the need to learn, move, and connect. It loves to explore, question, converse, and understand the world around it.
- **Sign associated with House 3:** communication, learning, exchanges, relationship with close environment (siblings).
- **Cancer:** A Water sign ruled by the Moon, it embodies gentleness, sensitivity, the need for protection and belonging. It is linked to memory, home, childhood, and emotional care.
- **Sign associated with House 4:** roots, family, intimacy, inner security, connection to the past.
- **Leo:** A Fire sign ruled by the Sun, it shines through generosity, creativity, confidence, and a need to be recognized. It expresses itself with heart and fully embodies its inner light.
- **Sign associated with House 5:** self-expression, creativity, love, children, joy of living.
- **Virgo:** An Earth sign ruled by Mercury, it represents analysis, attention to detail, humility, and a desire to be of service. It seeks to understand, improve, and organize its surroundings.
- **Sign associated with House 6:** daily work, sense of service, health, organization, attention to details.
- **Libra:** An Air sign ruled by Venus, it seeks harmony, beauty, balance, and relationship. It knows how to listen, reconcile, and create connections in a spirit of peace.
- **Sign associated with House 7:** relationships with others, partnerships, commitment, relational mirror.
- **Scorpio:** A Water sign ruled by Pluto (and Mars in traditional astrology), it is intense, deep, magnetic. It invites transformation, exploration of hidden emotions, and rebirth from ashes.
- **Sign associated with House 8:** inner transformations, sexuality, rebirth, shared resources.
- **Sagittarius:** A Fire sign ruled by Jupiter, it aspires to grow, to discover the world, and to broaden its vision. It is guided by a need for freedom, truth, and meaning.

- **Sign associated with House 9:** quest for meaning, travel, studies, spirituality, open-mindedness.
- **Capricorn:** An Earth sign ruled by Saturn, it is responsible, ambitious, and structured. It climbs toward goals with patience and builds something lasting step by step.
- **Sign associated with House 10:** vocation, responsibility, social status, career, public image.
- **Aquarius:** An Air sign ruled by Uranus (and Saturn in traditional astrology), it thinks differently, loves to challenge norms, and defends its ideals. It is future-oriented, innovative, original, and socially committed.
- **Sign associated with House 11:** friendships, group projects, vision for the future, social involvement.
- **Pisces:** A Water sign ruled by Neptune (and Jupiter in traditional astrology), it embodies sensitivity, imagination, empathy, and oneness with all. It feels everything, dreams big, and longs for unity.
- **Sign associated with House 12:** inner world, intuition, spirituality, solitude, unconscious.

## » THE PLANETS

- **Sun:** *Identity – Consciousness – Self-expression – Father figure*  
Represents the core of our personality, our deep will, life goals, and what we are meant to radiate. It symbolizes how we assert ourselves in the world.
- **Moon:** *Emotions – Emotional needs – Intuition – Mother figure*  
Expresses our inner world, sensitivity, intuition, instinctive reactions, and essential needs to feel safe.
- **Mercury:** *Communication – Thinking – Logical mind*  
Symbolizes our way of thinking, speaking, learning, and sharing. It's the planet of the mind, analysis, and exchanges.
- **Venus:** *Love – Value – Relationships*  
Represents our way of loving, attracting, connecting. It also speaks to our tastes, values, and relationship with beauty and pleasure.
- **Mars:** *Action – Desire – Assertion*  
Mars represents vital energy, courage to act, survival instinct, and how we pursue our desires or take initiative.
- **Jupiter:** *Expansion – Faith – Growth*  
Planet of luck and openness, it symbolizes optimism, confidence, sense of justice, and opportunities for personal or spiritual growth.
- **Saturn:** *Responsibility – Structure – Time*  
Saturn evokes rigor, boundaries, and learning through effort. It calls for maturity, patience, and long-term construction.



- **Uranus:** *Freedom – Change – Awakening*

It brings disruption, change, and innovation. Uranus urges us to break the mold, be authentic, and follow a unique, unpredictable path.

- **Neptune:** *Dream – Intuition – Illusion*

Planet of the invisible, Neptune speaks of spirituality, compassion, connection to something greater, but also confusion and illusion. It opens us to imagination and mystery.

- **Pluto:** *Transformation – Power – Regeneration*

Pluto symbolizes deep processes of death and rebirth. It highlights fears, shadow zones, and drives us toward inner transformation.

## » SENSITIVE POINTS AND SYMBOLIC ARCHETYPES

- **Ascendant (House I):** *Gateway – Appearance – Instinctive personality*

Determined by the exact birth time, it marks the starting point of the astrological houses. It's the primary energy we radiate. It influences our spontaneous behavior, how we approach new situations, and how others perceive us at first. It also shapes our personal style and body awareness.

- **Midheaven (MC or House X):** *Reputation – Career – Vocation*

The Midheaven represents our public role, how we are seen socially, and our deep ambitions. It also points to our life mission or how we fulfill ourselves professionally or collectively.

- **Chiron:** *Inner wound – Healing path*

Chiron shows an existential wound often felt early in life, a vulnerability that, once healed, becomes a source of wisdom and guidance for others. It holds deep meaning in spiritual or therapeutic readings.

- **Black Moon (Lilith):** *Instinct – Shadow – Repressed desire*

The Black Moon evokes what is hidden, taboo, or fascinating. It points to a void or lack in the chart. It also represents untamed feminine power or taboo sexuality.

- **North Node:** *Growth – Soul mission – Learning path*

The North Node indicates the direction of evolution in this life. It's a new, sometimes uncomfortable energy, but crucial for personal growth, fulfillment, and breaking past patterns. It guides us toward our deeper calling and the qualities we must develop.

- **South Node:** *Past – Comfort zone – Acquired skills*

The South Node shows natural talents and automatic behaviors, possibly from past lives or childhood. Though familiar, these patterns may hinder growth if overused. It represents what must be released to move toward the North Node.

- **Part of Fortune:** *Inner joy – Natural success – Personal abundance*

This symbolic point reveals what brings us simple joy, natural harmony, and "obvious" happiness. It also points to areas where life can open up more easily if we cultivate that quality within.

- **Vertex:** *Fateful encounters – Destiny – Karmic portal*

Seen as a "destiny call" point. It is said to be activated during significant, meaningful, and

often unexpected life encounters or events.

## » ASTROLOGICAL ASPECTS

- **Conjunction (0°):** Two planets side by side: they merge their energies, for better or for excess.
- **Sextile (60°):** A fluid link, natural cooperation potential between two energies.
- **Square (90°):** Tension or inner challenge: a need to reconcile two seemingly conflicting forces.
- **Trine (120°):** Ease, natural gift, smooth harmony between two parts of the self.
- **Opposition (180°):** Pulling in opposite directions, polarity: two parts of the self face each other, inviting balance and complementarity.